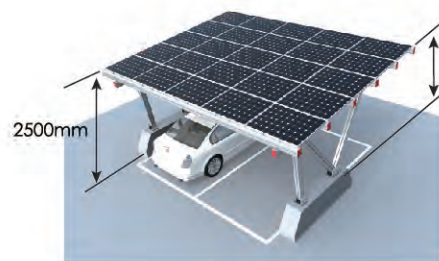
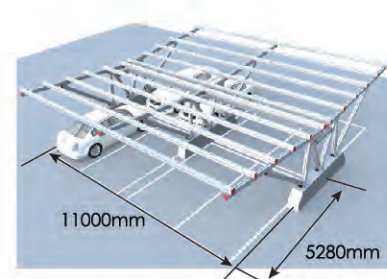
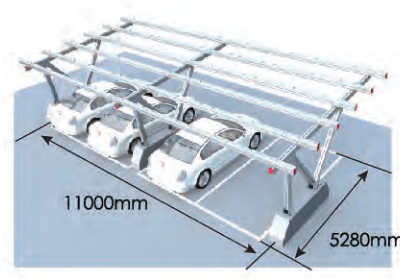
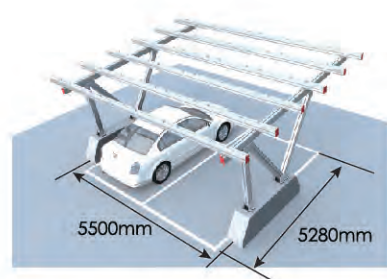
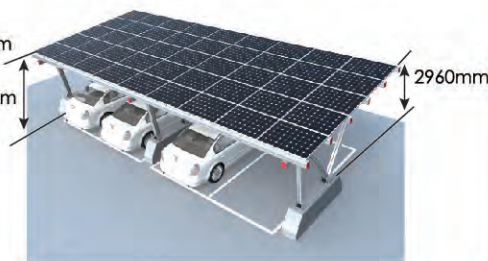


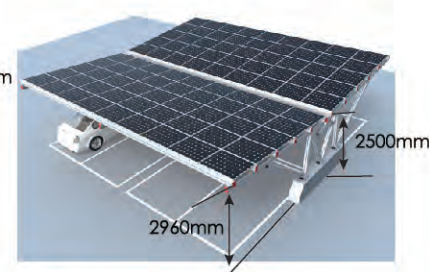
Simulated view



2 parking spaces



4 parking spaces



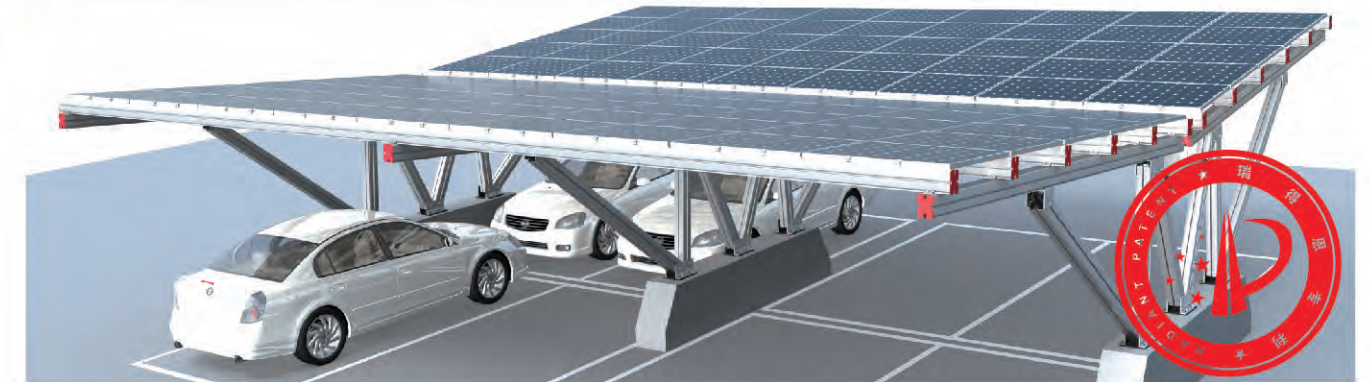
8 parking spaces



Reliable Energy Solutions

Solar Carport

Carport Energy Solution



Solar Carports not only protect cars from the effects of direct sunlight, rain and hail stones, but also produce power for wholesale generation, net-metering and electric vehicle EV/PHEV charging stations. Radiant Solar Carports not only look great, they are easy to install and made to endure even the harshest climatic conditions.

Effective Use of Space

Solar carports provide for the effective use of existing parking space and not only convert sunshine into electric energy but also maximize usage of land resources.

Immediate Benefits

- As a carport, it can protect vehicles from rain and the harsh effects of the sun.
- As a Solar Power source, it can charge electric vehicles or provide direct power to offices, retail, residential or the grid.
- Barrier-free design. Our designs allow vehicles to enter and exit the parking space freely without fear of nudging the support structure.
- Advertising is easily attached to the structure creating an additional source of revenue. For example, advertising banners in shopping center car parks.

Significant savings

- The high percentage of factory pre-assembled components deliver significant installation savings.

- Easy installation. We provide a simple and easy to understand installation guide. The main structural components of the system are marked with different colors so that you can see which parts fit together (pink to pink, blue to blue, etc).
- Our carport systems allow for generous tolerances for vertical and horizontal adjustment.
- A completely modular installation program.

Engineering Excellence

We provide static analysis including material optimization for each project. All stability tests are carried out according to current global standards.

Maximum service life

All components are made of aluminum (anodized AL6005-T5) and stainless steel (SUS304) guaranteeing long service-ability, pleasing aesthetics, a high recyclable value and low waste disposal costs. Maintenance costs are minimized and you need not be concerned about rust breaking through that is common with galvanized steel structures.



Reliable Energy Solutions

Solar Carport

Solar Carport



Height adjustment tolerance: 35mm
 North and south direction adjustment tolerance: 50mm
 Suitable Foundation: Concrete

Module installation area:

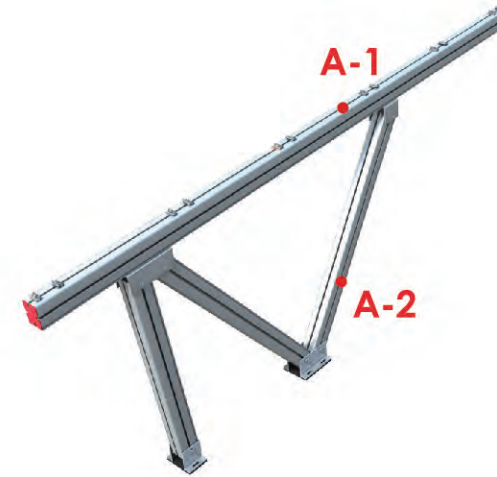
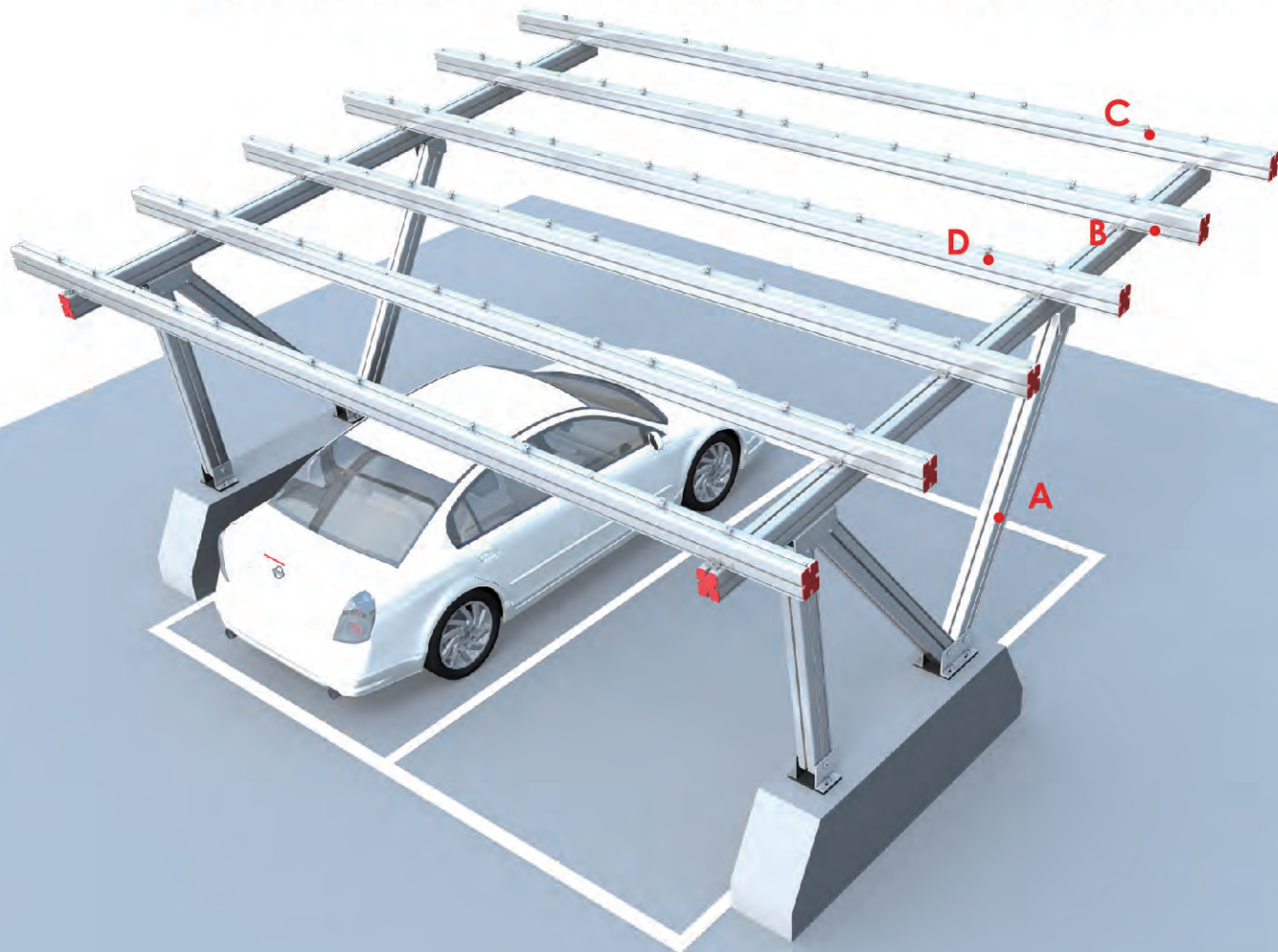
- 2 parking spaces: APP. 33m²
- 4 parking spaces: APP. 57m²
- 8 parking spaces: APP. 106m²



2 parking spaces

4 parking spaces

8 parking spaces



A-1 / A-2: Cross Beam 120x160

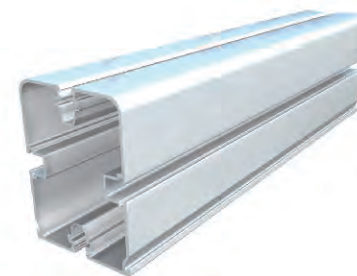
Material: AL6005 - T5



Base Rail 120x160



Channel weight: 6.86kg/m
 Material: AL6005-T5
 Permitted Tension σ_{all} : 235N/m²
 Anodizing thickness: $\geq 12 \mu\text{m}$



Module End / Middle Clamp Kit



Module Thickness: 30mm-52mm
 Module orientation: Landscape, portrait
 Material: AL6005-T5& SUS304



Technical Datasheet:

Application	Open terrain - ground mount, large commercial parking areas, small to mid-sized commercial and residential applications
Wind load	up to 42m/s
Snow load	1.4KN/m ²
PV modules	Framed, unframed
Module orientation	0° - 20°
Ground clearance	App 2.5m
Standards	JIS 8955: 2011/DIN1055/ASCE_7-05/AS/NZS1170
Color	Natural
Warranty	10 years

